

Thank You

Thanks for purchasing a PT-500Y series pressure transmitter from us! We appreciate your business and your trust. Please take a moment to familiarize yourself with the product and this manual before installation. If you have any questions, at any time, don't hesitate to call us at 888-525-7300.

You can find a full list of our product manuals at:

www.apgsensors.com/resources/product-resources/user-manuals

Table of Contents

1. Description	5. Dimensions	10. Repair Information
2. How To Read Your Label	6. General Care	11. Removal Instructions
3. Warranty	7. Wiring Information	12. Hazardous Location Wiring
4. Mounting Instructions	8. Zero Adjust	
	9. Vent Tube Drying	

1 Description

PT-500Y submersible pressure transmitters offer reliability in harsh industrial conditions and hazardous locations. The PT-500Y is certified intrinsically safe for hazardous areas in the US and Canada by CSA. The small size, integrated electronics, wide operating temperature range, and durability make the PT-500Y the perfect instrument for static and dynamic pressure measurement.

2 How To Read Your Label

Each label comes with a full model number, a part number, and a serial number. The model number for the PT-500Y will look something like this:

SAMPLE: PT-500Y-400-FTH2O-G-L1-E0-P37-N0-500

The model number correlates with all the configurable options and tells you exactly what you have. Compare the model number to the options on the datasheet to identify your exact configuration. You can also call us with the model, part, or the serial number and we can help you.

The label also includes the pinout, as does this installation guide. You'll also find all hazardous certification information on the label.

3 Warranty

This product is covered by APG's warranty to be free from defects in material and workmanship under normal use and service of the product for 24 months. For a full explanation of our Warranty, please visit <https://apgsensors.com/warranty-returns/>. Contact Technical Support to receive a Return Material Authorization before shipping your product back.

4 Mounting Instructions

The PT-500Y should be installed in an area--indoors or outdoors--which meets the following conditions:

- Ambient temperature between -40°F and 176°F (-40°C to 80°C)
- Relative humidity up to 100%
- Altitude up to 2000 meters (6560 feet)
- IEC-664-1 Conductive Pollution Degree 1 or 2
- IEC 61010-1 Measurement Category II
- No chemical corrosive to stainless steel (such as NH₃, SO₂, Cl₂, etc.)
- Ample space for maintenance and inspection
- Class 2 SELV power supply

Your PT-500Y can be mounted in three ways: via NPT process connection, free-hanging suspension, or conduit mounted. Mounting your pressure transducer is easy if you follow a few simple steps:

- Never over-tighten the sensor. This can compress the diaphragm, changing how it reacts to pressure. In all cases, tighten the sensor as little as possible to create an adequate seal.
- Always use thread tape or sealant compound on tapered threads. Wrap thread tape in the opposite direction of the threads so it does not unravel as you screw the sensor into place. Unraveling can cause uneven distribution and seal failure.
- Always start screwing in your sensor by hand to avoid cross-threading. Thread failure can be a problem if you damage threads by over-tightening them or by crossing threads.
- For suspension mounting the PT-500Y, drill a 3/16" hole into a 1/2" NPTF to 1/2" NPTF hex coupler and secure it to the 1/2" NPTM coupler fitting of the PT-500Y. Attach a .060" diameter 316L SS cable of desired length to the hex coupler and secure the steel cable according to your application requirements.

IMPORTANT: Your PT-500Y MUST be installed according to drawing 9002803 to meet listed hazardous approvals. Faulty installation will invalidate safety approvals and ratings.

PT-500Y SERIES

Pressure Transmitters

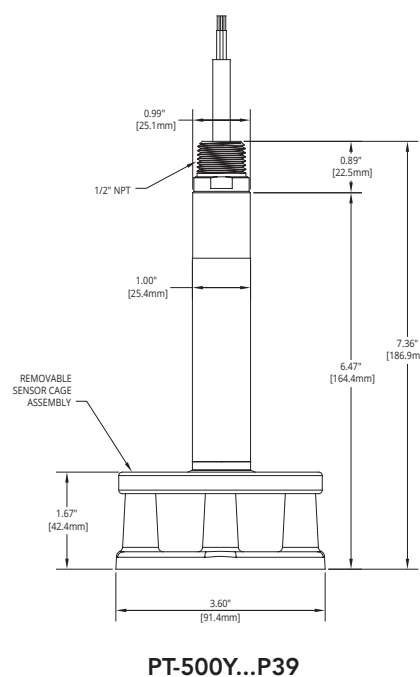
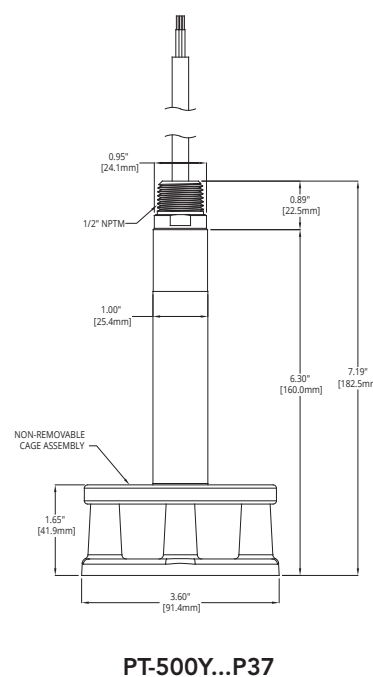
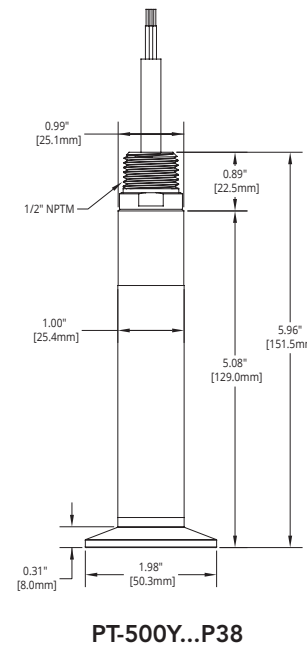
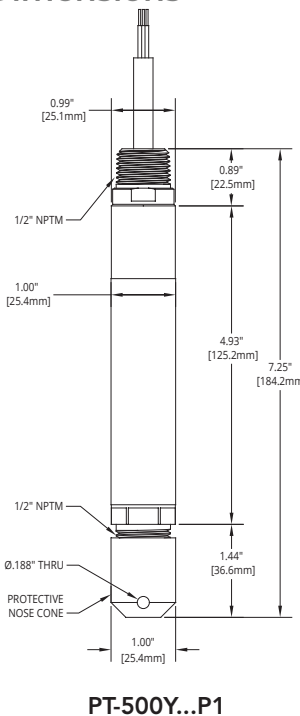
Installation Guide



Automation Products Group, Inc.
1025 W 1700 N Logan, UT 84321
www.apgsensors.com | phone: 888-525-7300 | email: sales@apgsensors.com

Part # 122950-0004
Doc #9004122
04/2026 Rev D

5 Dimensions



6 General Care

Your pressure transmitter is very low maintenance and will need little care, as long as it was installed correctly. However, in general, you should:

- For process connected sensors, keep the sensor and the area around it generally clean.
- Avoid applications for which the sensor was not designed, such as extreme temperatures, contact with incompatible corrosive chemicals, or other damaging environments.
- Inspect the threads whenever you remove the sensor from duty or change its location.
- Avoid touching the diaphragm. Contact with the diaphragm, especially with a tool, could permanently shift the output and ruin accuracy.
- Cleaning the diaphragm or the diaphragm bore should be done with extreme care. If using a tool is required, make sure it does not touch the diaphragm.

IMPORTANT: Any contact with the diaphragm can permanently damage the sensor. Use extreme caution.

7 Wiring Information

PT-500Y Series Pin Out Table

		4-20 mA	Voltage	Modbus
Pigtail	Red	+ Power/Signal	+ Power	+ Power
	Black	- Power/Signal	- Power	- Power
	Green	-	+ Out	B (TX-)
	White	-	- Out	A (TX+)
	Shield Drain	Case Gnd	Case Gnd	Case Gnd

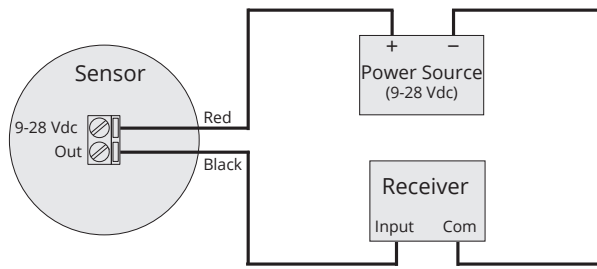
Note: Either transducer case OR shield drain wire must be physically connected to low-impedance earth ground.

PT-500Y Series Supply Power Table

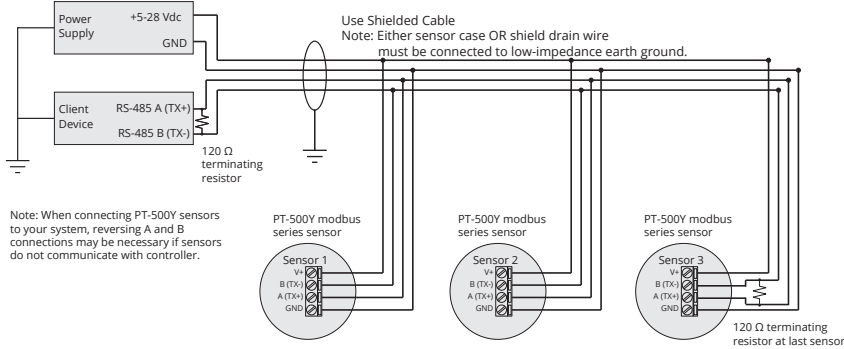
	4-20 mA	0-5 VDC	0-10 VDC	mV/V	Modbus
Power Supply	9-28 VDC	9-28 VDC	14-28 VDC	10 VDC*	5-28 VDC

* mV/V output calibrated to 10 VDC input.

PT-500Y 4-20 mA System Wiring



PT-500Y Modbus System Wiring



8 Zero Adjust (4-20mA, 0-5 VDC, 0-10VDC series only)

The zero output (4mA or 0 VDC) can be adjusted by holding a magnet perpendicular to the can, approximately 1-1/2" from the top or bottom of the can.

Holding the magnet close to the top of the can increases the output. Holding the magnet close to the bottom of the can decreases the output.

If the zero output values do not change right away, hold the magnet in place near the top of the can until the values change, for up to two minutes. If there is no change, repeat the procedure near the bottom of the can. If there is still no change, consult the factory.

Unvented PT-500Y transmitters do not automatically adjust to changes in barometric pressure. We recommend that PT-500Y transmitters be zeroed upon receipt, and after major weather events.

NOTE: Span calibration must be done at the factory for all analog models.

9 Vent Tube Drying

Condensation in the vent tube can damage the electronics in your sensor, resulting in unreliable readings. APG offers two methods of preventing vent tube condensation: a venting cap and a desiccant drying cartridge.

The venting cap is a PVC tube with a hydrophobic patch that allows moisture to pass out of the tube without allowing water in. The cap is sealed by an o-ring, and is easily installed in the field.

The desiccant drying cartridge with vent tube adapter absorbs any moisture in the vent tube to keep vapor from condensing. The installation of the desiccant drying cartridge is quick and easy. Common installation methods are cable tie, Velcro, and cable clamps.

NOTE: Desiccant crystals change from blue to pink as they become saturated. Cartridge must be replaced when all crystals have saturated.

IMPORTANT: Do NOT use desiccant cartridge in the presence of vapors of liquids containing phosphate esters, synthetic lubricant, hydrocarbon solvents, methanol, acetone, lacquer solvents, or other organics.

10 Repair Information

If your pressure transmitter needs repair, contact us via email, phone, or on-line chat on our website. We will issue you an RMA number with instructions.

- Phone: 888-525-7300
- Email: sales@apg sensors.com
- Online chat at www.apg sensors.com

NOTE: APG recommends sending your unit in for NIST calibration services at least once a year, though frequency may vary by sensor, regulation, or application. Contact our Technical Support to schedule a service.

NOTE: APG recommends replacing your liquid ingress prevention accessory at least once a year. To learn more, contact our Technical Support.

11 Removal Instructions

Removing your PT-500Y from service must be done with care. It's easy to create an unsafe situation, or damage your sensor, if you are not careful to follow these guidelines:

- For sensors installed via NPT process connection, make sure the pressure is completely removed from the line or vessel. Follow any and all procedures for safely isolating any media contained inside the line or vessel.
- Remove the sensor with an appropriately sized wrench (per your process connection).
- For suspended sensors, retrieve the sensor from the vessel. Follow any and all procedures for safely isolating any media contained inside the line or vessel.
- Carefully clean the sensor's fitting and diaphragm of any debris (see General Care) and inspect for damage.
- Store your sensor in a dry place, at a temperature between -40° F and 180° F.

DANGER: Removing your process connected PT-500Y Pressure Transmitter while there is still pressure in the line could result in injury or death.

12 Hazardous Location Wiring

Intrinsically Safe Wiring (4-20mA Output)

